

# Ranunculaceae

## The Buttercup Family

62 genera  
2,450 species

Older flower, with  
developing follicles



### Distribution:

A truly cosmopolitan family, present on all continents except Antarctica. Most prominent in temperate and boreal regions, and most species grow in mesic or wet environments.

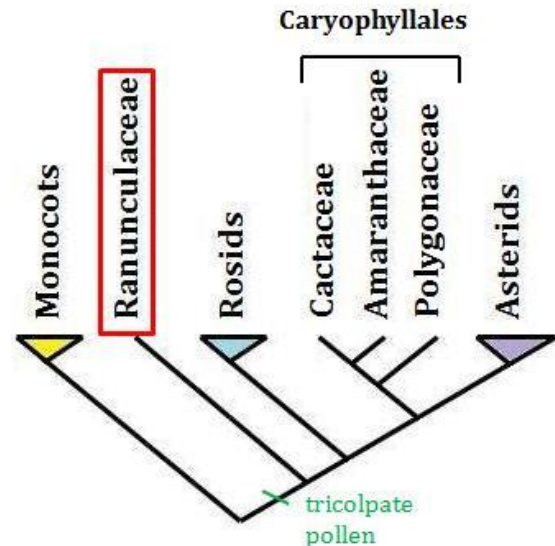
### Economic Uses:

- Many genera in this family have ornamental species that are used in

gardens. Most of the common names are familiar in nurseries across the world. Examples include: *Clematis*, *Aquilegia* (columbines), *Delphinium*, etc.

- A number of genera are highly poisonous and some species have traditional medicinal uses.

### Reduced Phylogeny of Required Families



### Characteristic features:

- Herbs (sometimes shrubs or vines) with dissected (toothed or lobed) leaves.
- Wide range of floral diversity and pollination syndromes.
- Flowers: receptacle short to elongated, parts in spirals; tepals 4 to many; stamens numerous; 5+ free carpels
- Fruit usually an aggregate of follicles or achenes.

### References for further inquiry:

- Jensen, U., Hoot, S.B., Johnsson, J.T., & Kosuge, K. Systematics and phylogeny of the Ranunculaceae – A revised family concept on the basis of molecular data. *Plant Syst. Evol.* 9 (Supplement): 273-280 (1995).
- Heywood, V.H., Brummitt, R.K., Culham, A., & Seberg, O. Ranunculaceae. Pp. 273-276. In: *Flowering Plant Families of the World*. New York, Firefly Books (2007).